

## X100 Laser Scanner

Small & Light  
Laser Scanner



# X100

## Light & Fast

X100 is a small and compact terrestrial laser scanner that is quick and easy to use.

Its multi-line lidar technology and ability to achieve complete coverage of the surrounding area enable it to calculate 3D models for a wide range of applications and scenarios, both outdoors and indoors.

The scanner comes with its own X100app field app, making it easy to control the device. Thanks to the scan converter, the data is compatible with Cube-3d and Stonex Reconstructor, as well as third-party software.

The X100 is the perfect tool for quick topographic surveys, scans of building facades and data collection for floor plans; a quick 360° scan takes as few as 45 seconds.

The built-in panoramic camera allows you to add true colour to your scans.



### SMALL AND LIGHT

The scanner can be easily used by a single person thanks to its small size and weight of approximately 3 kg.



### WIRELESS CONTROL

Through the dedicated APP it is possible to control the device remotely. Scan with one click and check quality via real-time preview.



### PANORAMIC HDR CAMERA

Add colour to your scan.



### SELF CALIBRATING

± 5 degrees tilt supplement angle for precise leveling. Monitor scanner leveling via electronic bubble available on the app.



### FAST SCAN & DOWNLOAD

A 360° one-stop scan requires only 45 s. Data are saved on USB dongle directly. Post-processing begins after field work!







## APPLICATIONS

X100 is the perfect instrument for efficient and precise work in a wide range of applications:

### Land & Excavation

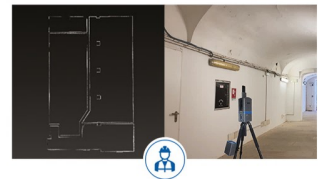
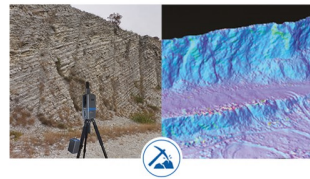
Terrain Elevation Models, Volume calculation, Tunnels, Profiles and Contours.

### Architecture & Real Estate

Floor plans, Sections, facade scanning.

### Emergency Management

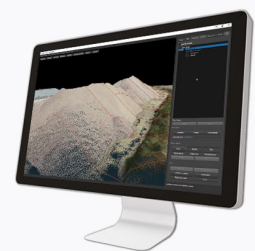
Assessment and support of Emergency Response Planning.



## 3D SOFTWARE



Cube-3d is a Photogrammetric software for mapping and aerial image processing, dedicated to land surveying specialists. It will transform image data into highly accurate digital maps and 3D models with extreme precision. It imports Cube-a surveys and is fully compatible with registered Stonex scans and with any third-party 3D models.



## STONEX 3D RECONSTRUCTOR

The Stonex Reconstructor software allows you to manage and align point clouds acquired through laser scanners or other sensors (such as Stonex handheld scanners), clouds produced by photogrammetry and in general any point cloud. Complete and clear workflows will guide you during the processing and the expandable modules are able to meet different needs, covering many fields, such as: surveying, mining, construction, architecture, cultural heritage, BIM, galleries etc.

# X100 TECHNICAL FEATURES

## LASER

Max Range	120 m
Min Range	0.5 m
Vertical Resolution	16 channels
Scanning Point Frequency	320.000 pts/s
Scan Principle	ToF
Field of View	Horizontal 360° Vertical 268°
Laser Class	Class 1
Wavelength	905nm

## PERFORMANCE

Measuring Mode	2 modes: Normal and High
Collection Time	From 45s to 225s
Relative Accuracy	Up to 6 mm <sup>1</sup>
Resolution	6 mm @10 m
Dual axis tilt compensation	± 5°

## CAMERA

Dimension	66 mm x 22.5 mm x 160 mm
FOV	360°
Resolution	18MP (6080x3040)
Management	Integrated in X100app

## SYSTEM

Data Storage	U-Disk 64GB
Operation Mode	Realtime visualization (Android 10 or above)
Communication	WI-FI

## ELECTRICAL SPECIFICATION

Power Consumption	28W
Operating Time	6h (2 batteries – 3h each) <sup>2</sup>
Capacity	25700mAh x2

## PHYSICAL SPECIFICATION

Operating Temperature	0°C to +40°C (+32°F to +104° F)
Storage Temperature	-20°C to +60°C (-4°F to +140° F)
Waterproof/Dustproof	IP54
X100 Weight	3,2 kg
X100 Size	125 mm x 113 mm x 275 mm
Case Weight	3 kg
Case Size	428 mm x 350 mm x 230 mm
Tripod Weight	1,92 kg
Tripod Height	1.5 m

1. In controlled environment.

2. Tested at 25°C~27°C, charging time and duration will vary depending on conditions.

Illustrations, descriptions and technical specifications are not binding and may change

**TECH4MAPS**  
Solutions cartographiques

STONEX AUTHORIZED DEALER

**STONEX®**  
Part of UniStrong

Viale dell'Industria 53 - 20037 Paderno Dugnano (MI) - Italy  
Phone +39 02 78619201  
www.stonex.it | info@stonex.it