

X200^{GO} Laser Scanner

3D Handheld
Laser Scanner



X200^{GO} TECHNICAL FEATURES

The X200^{GO} is the latest generation system based on the SLAM technology, capable of covering any customer need.

The range of up to 300 metres and a rotating head that maximises the coverage of the laser beam make it versatile for any environment. Equipped with 2 cameras and RTK receiver for real-time point cloud colouring and orientation. The two cameras provide navigable and measurable panoramic cameras superimposed on the 3D model. The system allows for the survey of static scans in X-Whizz mode, automatically aligned to the SLAM survey.

Backpack, shoulders hook, car mount and holder for DJI M350 can complete the system.

LIDAR

Sensor Model	Hesai XT32M2X
Max Range	300 m
Min Range	0.5 m
Return number	3
Scanning Point Frequency	Single Ret.: 640.000 pts/s Dual Ret.: 1.280.000 pts/s Triple Ret.: 1.920.000 pts/s
Field of view	360° x 270°
Laser Class	1
Channels	32
Wavelength	905nm

COLOR CAMERA

N° of pixels	24 Mpx (2 cameras, 12 MPx each)
Diagonal FOV	210°
Focal length	1.26 mm
Resolution	4000x3000 px
Sensor size	1/2.3 inch
Pixel size	1.55 μm

GNSS RECEIVER

Satellites Signal	GPS L1 C/A/L2P(Y)/L2C/L5 GLONASS G1/G2 Galileo E1/E5A/E5B BDS B1I/B2I/B3I QZSS L1/L2/L5
DGPS (RMS)	Horizon 0.4 m+1 ppm Vertical 0.8 m+1 ppm
RTK (RMS)	Horizon 0.8cm+1ppm Vertical 1.5cm+1ppm
Speed accuracy (RMS)	0.03m/s

SYSTEM

Relative accuracy	Up to 6mm ¹
Global accuracy	Up to 2cm ¹
Control point support	5cm on UAV platform ¹ Ground & wall
Data storage	512GB SSD
Communication	Wi-fi, Bluetooth, USB type-c, Lemo connector
Operating mode	SLAM & X-Whizz modes, Real-time visualisation, colouring and orientation
Processing mode	Real-time processing Post-processing with GOpost ²

ELECTRICAL SPECIFICATION

Power consumption	26W
System supply voltage	20V
Operating time ³	1.2 h (single battery)
External power	USB type-c
Battery input voltage	5-20V
Battery output voltage	10.8V
Battery capacity	3000mAh

PHYSICAL SPECIFICATION

Weight	1.4 kg (without battery) 1.9 kg (with battery)
Size	403.6 mm x 173.8mm x 170mm
Operating temperature	-20°C to +50°C (-4°F to 122°F)
Operating humidity	<95%
Waterproof/Dustproof	IP54

1. Environment dependent
2. Any CPU, only NVIDIA GPU
3. SLAM only, no external platforms

BUNDLED SOFTWARE

GOapp

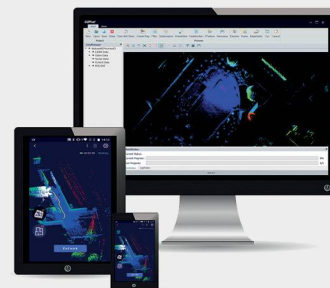


GOapp is dedicate mobile application for Stonex SLAM scanners, to manage projects, real time point cloud display, image preview, firmware upgrade and other operations. The APP runs on Android and iOS operating system.

GOpost



Windows post processing software which performs optimization processing, colouring of point clouds and creation of panoramic images. You can also import control points to georeference the point cloud.



Illustrations, descriptions and technical specifications are not binding and may change

TECH4MAPS
Solutions cartographiques

STONEX AUTHORIZED DEALER

STONEX®

Viale dell'Industria 53 - 20037 Paderno Dugnano (MI) - Italy
Phone +39 02 78619201
www.stonex.it | info@stonex.it